

TECHNICAL SPECIFICATIONS

Model	LPT 1212 Sleeper Cab
Engine	TATA 497 TCIC BS4 CR
Engine Displacement	3783 cc
Power	123 HP @ 2400 rpm
Torque	400 Nm @ 1 300 - 1 600 r/min
Clutch	Single plate dry friction type, 330 mm
Gearbox	GB40 (8.98) rod shifting (mechanical linkage) (5 F + 1 R)
Gear Ratio	1st - 8.98, 2nd - 4.77, 3rd - 2.63, 4th - 1.66, 5th - 1.00, Rev - 8.29
Suspension - Front	Semi-elliptical leaf spring with hydraulic double acting telescopic shock absorbs
Suspension - Rear	Semi-elliptical leaf spring
Tyres	9 R 20 - 16 PR
Steering Type	Integrated hydraulic power steering (tilt & telescopic)
Brakes Type	Dual circuit full air S-Cam brakes with ABS
Ground Clearance	245 mm
Gradeability	25.4 %

Model	LPT 1212 Sleeper Cab
Rear Axle Type	Fully floating axle RA108R, 5.857 RAR
Battery	12 V, 100 Ah
Fuel Tank Capacity	160 l
Wheelbase	4830 mm
TCD	16.7 m
GVW	10950 kg
FAW	3660 kg
RAW	7290 kg

Specifications are subject to change without prior notice. These are indicative photos, specifications for reference only.



TATA MOTORS

For further information write to: TATA MOTORS LIMITED
International Business – Commercial Vehicles
Shiv Sagar Estate, Worli, Mumbai - 400018, Maharashtra, India.
Tel: 91 22 67577200 | Fax: 91 22 67577225 | Website: www.tatamotors.com

Terms & Conditions apply as per the policy of ITGI. Insurance available on light, intermediate & heavy commercial vehicles.
CAUTION: Accessories shown in the picture or elsewhere do not constitute standard fitment.
The specifications are merely indicative. Due to continuous product improvements, these specifications are liable to change without notice.



TATA MOTORS
Connecting Aspirations

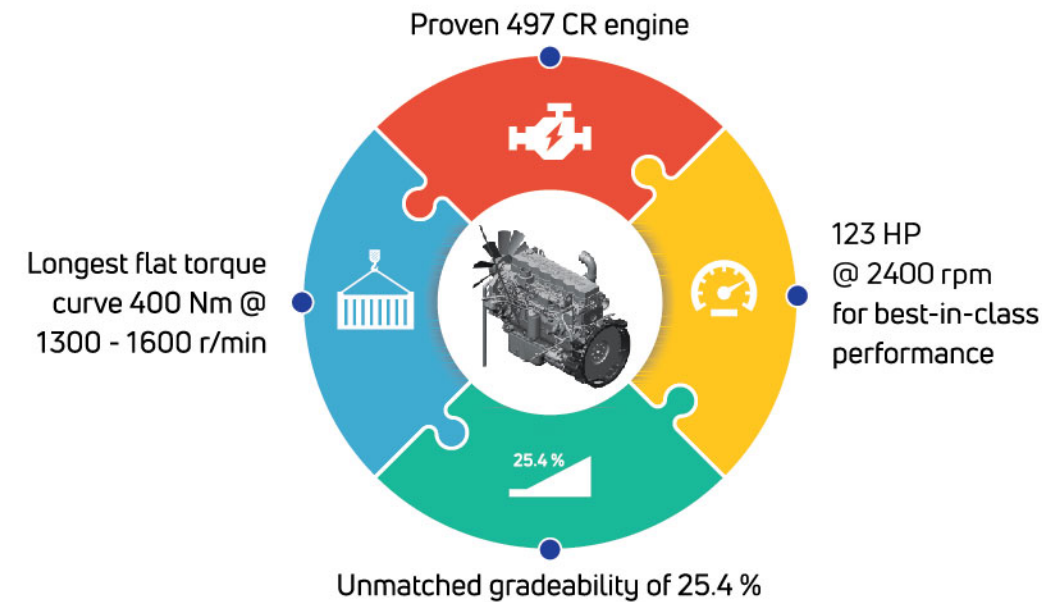


LOAD ON. PROFIT ON.

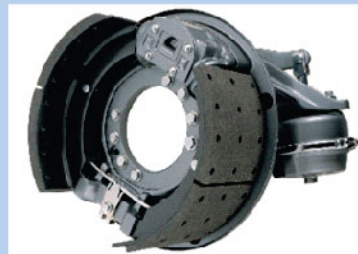
Presenting LPT 1212 with Sleeper Cab

With Xtra Payload | Xtra Mileage | Xtra Comfort

PRODUCT HIGHLIGHTS



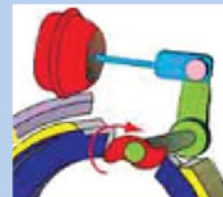
FULL AIR DUAL CIRCUIT S-CAM BRAKES



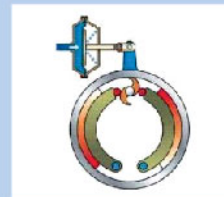
Efficient Braking system
Economical - No oil required
Safer - Shorter Braking Distance



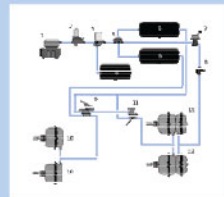
S-Cam Brake



Automatic Slack Adjuster



Drum Dia 360 mm



Dual Circuit Brake

APPLICATIONS



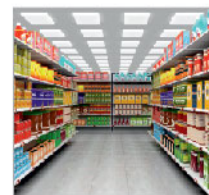
Parcel and Courier



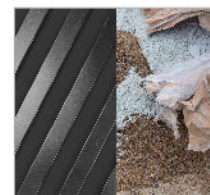
Pharma



Market Load



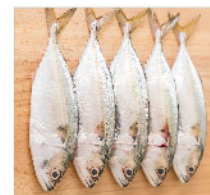
FMCG



Steel & Cement



LPG Cylinders



Fisheries



White Goods

THE FEATURES-LOADED CABIN



Door Handle Cum Armrest
Allows the driver to rest his arm during long drives



Reclining, Sliding, Height Adjustable Driver's Seat
Ergonomically designed adjustable MELBA fabric seats. Allows the driver to adjust the best position for driving comfortably



ELR Seatbelt
Emergency Locking Retractor seatbelt for additional safety in case of collisions



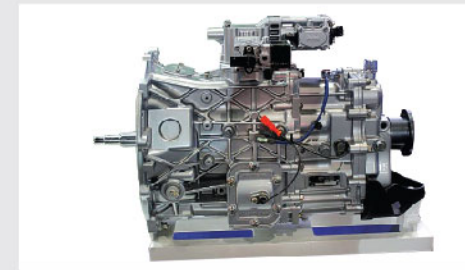
New Improved Dash Board & Interior
Power steering, ergonomically designed seats for better driving comfort for long distance operation

PERFORMANCE ENABLERS



Clutch

330 mm single plate, dry friction type booster assisted for smooth gear shifting and less wear and tear



Gearbox

GBS40 (5 F + 1 R) proven gearbox with highest life and reliability



Chassis

Ladder type heavy duty frame with riveted & bolted cross members



Axles

FA: Heavy duty forged I beam, reverse elliot type
RA: Fully floating Tata RA108R heavy duty axle, suitable for all applications



Suspension

- Semi-elliptical leaf spring suspension with Hydraulic double acting telescopic type shock absorber at the front



Radial Tyres

- 9 R 20 -16 PR
- Longer tyre life
- Better fuel efficiency due to less rolling resistance
- Shorter braking distance
- Better stability, fewer punctures



Tiltable Cabin

- The new TATA LPT 1212 SLP CAB comes with tiltable cabin
- Easy to perform extensive maintenance work



Cabin Comfort Package

- Package-integral hydraulic power assisted steering
- Ergonomic steering wheel
- MELBA fabric mechanically suspended ultra seats
- Ergo instrument cluster
- Less fatigue to driver means more trips per month
- Suitable for long haul applications